

# USM

## Utensili sagomati sgrossatori e finitori per Minuteria

Roughing and finishing tools for variety lathe  
Schrupp- und Schlichtwerkzeugen für Kleindrehteile

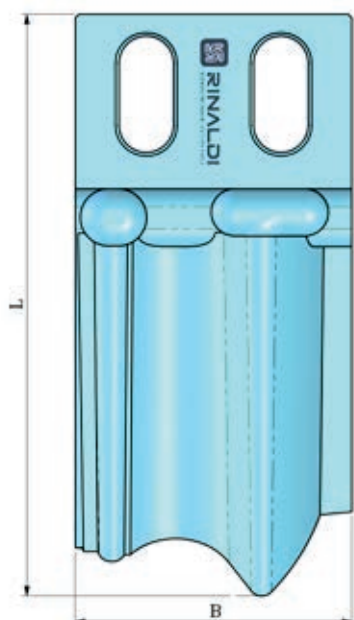
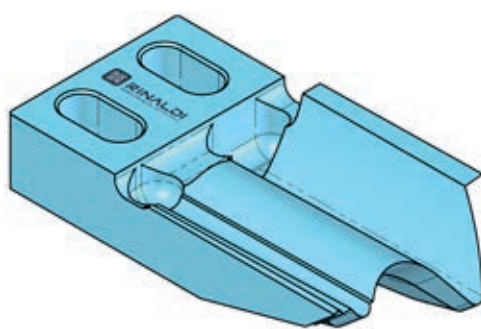
HSS

HL  
K100

ON  
REQUEST

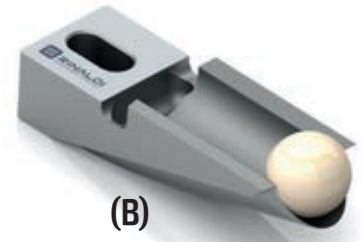
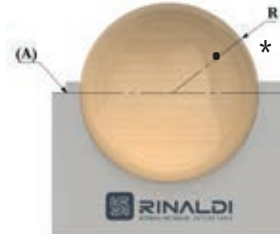
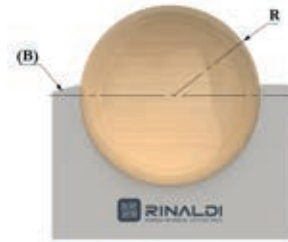
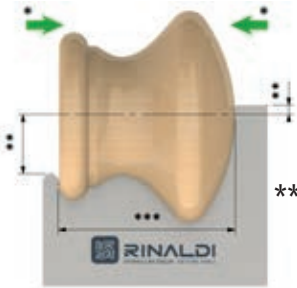


CODICE	L	B	H
USM	-	-	-



# Specifiche da fornire

Required specifications  
Erforderliche Angaben



Aletta troncatrice fino al centro del pezzo di legno (B)  
Parting off edge up to the center of the wood piece (B)  
Abstechkante bis zur Mitte von Holzstück (B)

Aletta troncatrice fino al centro del pezzo di legno (A)  
Parting off edge up to the center of the wood piece (A)  
Abstechkante bis zur Mitte von Holzstück (A)

## IMPORTANTE

MARCA E MODELLO MACCHINA	TIPO DI ACCIAIO (HSS/HL)	UTENSILE FINITORE E/O SGROSSATORE	INDICARE LATO TAGLIO (*) E SE IL PEZZO DEVE ESSERE TAGLIATO DALL'UTENSILE (A)..(B)	LUNGHEZZA UTENSILE	INDICARE QUOTE SIA DEL LATO TAGLIO CHE DELLA CONTROPUNTA **	FORNIRE CAMPIONE LEGNO DA REALIZZARE O DISEGNO QUOTATO ***
--------------------------	--------------------------	-----------------------------------	--	--------------------	---	--

## IMPORTANT

TRADE NAME AND MODEL OF LATHE	TYPE OF STEEL (HSS / HL)	FINISHING AND/OR ROUGHING TOOL	INDICATE THE SIDE OF PARTING OFF (*) AND IF THE WOOD PIECE IS TO BE CUT BY THE TOOL (A)..(B)	TOOL LENGTH	INDICATE MEASURES BOTH ON SIDE OF THE PARTING OFF AND OF THE TAILSTOCK **	PROVIDE WOOD SAMPLE TO BE REALIZED OR DRAWING WITH MEASURES ***
-------------------------------	--------------------------	--------------------------------	--	-------------	---	---

## WICHTIG

MARKE UND MODELL DER DREHMASCHINE	STAHLORTE (HSS/ HL)	SCHLICHT UND/ODER SCHRUPPSTAHL	GEBEN SIE DIE ABSTECHESEITE AN (*) UND BESTÄTIGEN SIE, OB DAS WERKSTÜCK VOM WERKZEUG (A)..(B) BEARBEITET WIRD	WERKZEUGLÄNGE	MAßE ANZUGEBEN SOWOHL AUF DER SEITE VON ABSTECHESTAHL UND VON DER REITSTOCKSPITZE **	SENDEN SIE UNS EIN HOLZMUSTER ODER EINE ZEICHNUNG MIT MAßEN ***
-----------------------------------	---------------------	--------------------------------	---	---------------	--	---